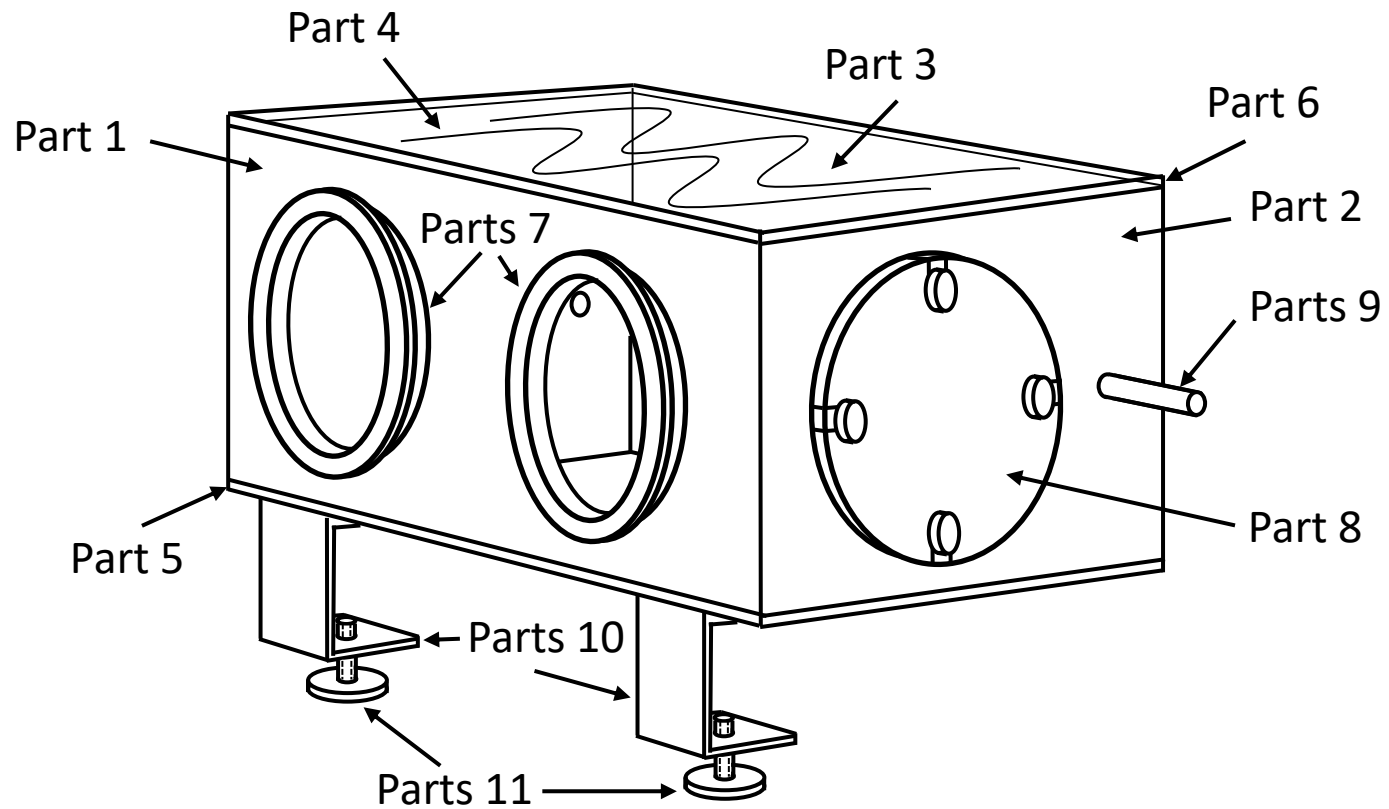


Different parts of the mini glove box:

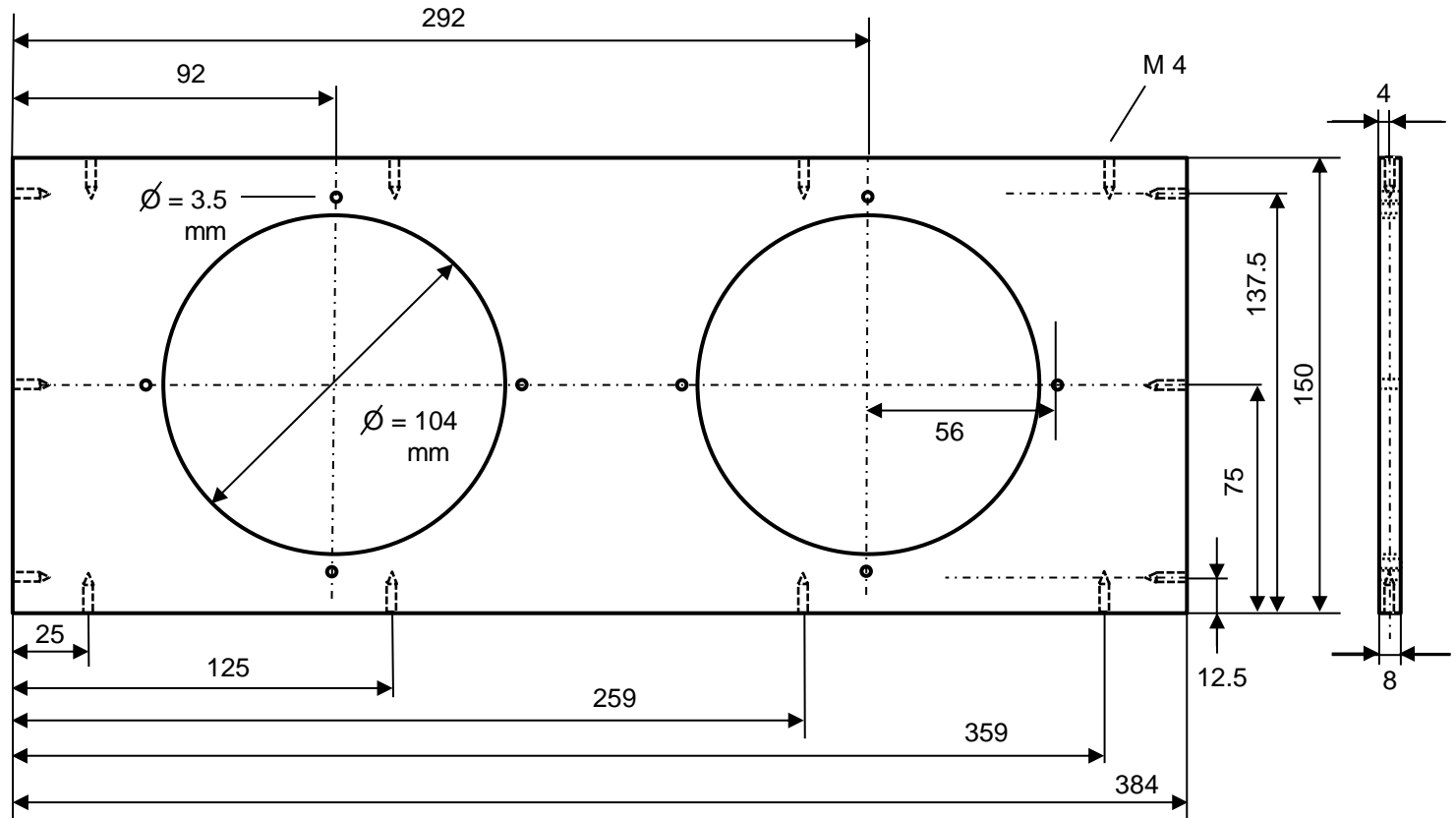


drawing not to scale!

Michael Hunger
Universities of Leipzig and Stuttgart

Part 1:

material plexiglass, polyvinyl chloride (PVC) or aluminum

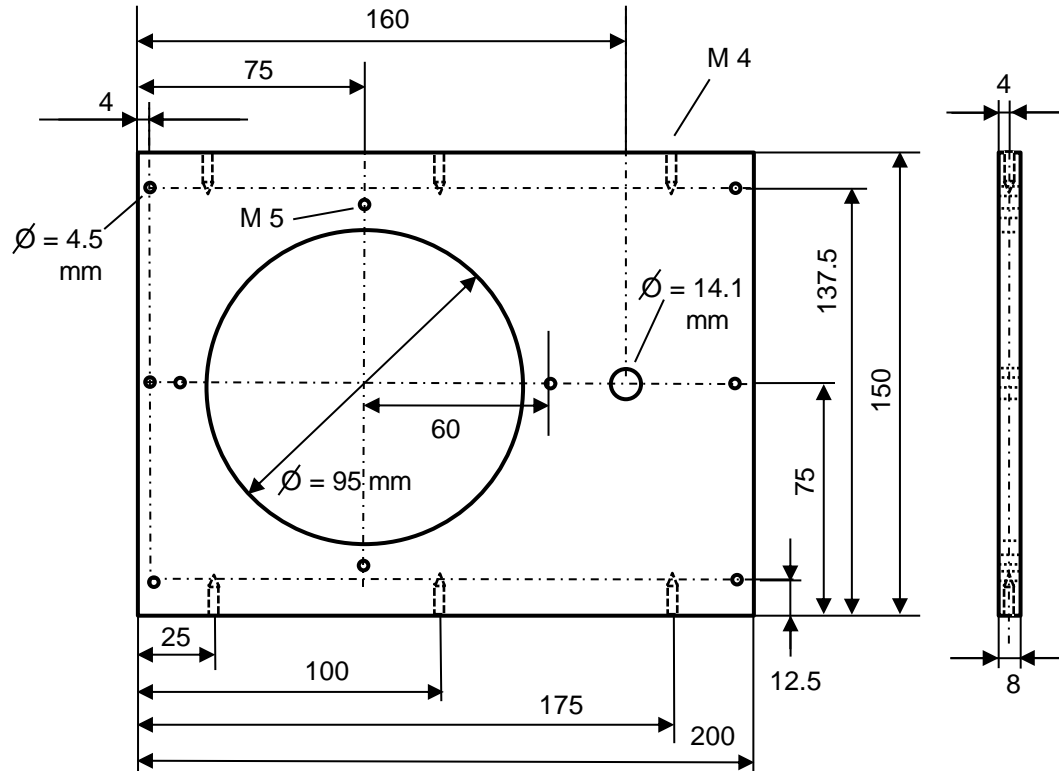


drawing not to scale!

Michael Hunger
Universities of Leipzig and Stuttgart

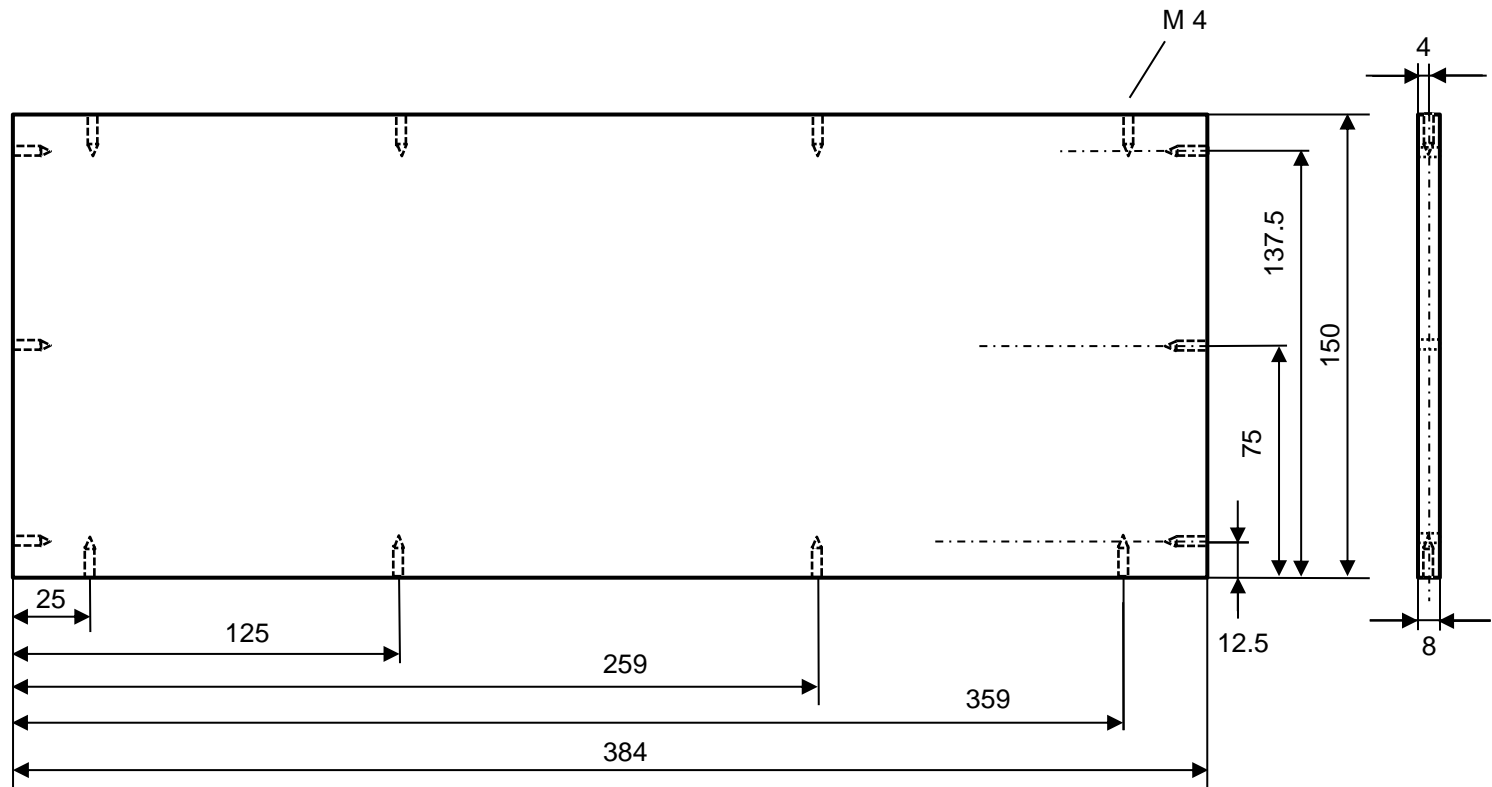
Part 2:

material polyvinyl chloride (PVC) or aluminum



drawing not to scale!

Part 3:
material polyvinyl chloride (PVC) or aluminum

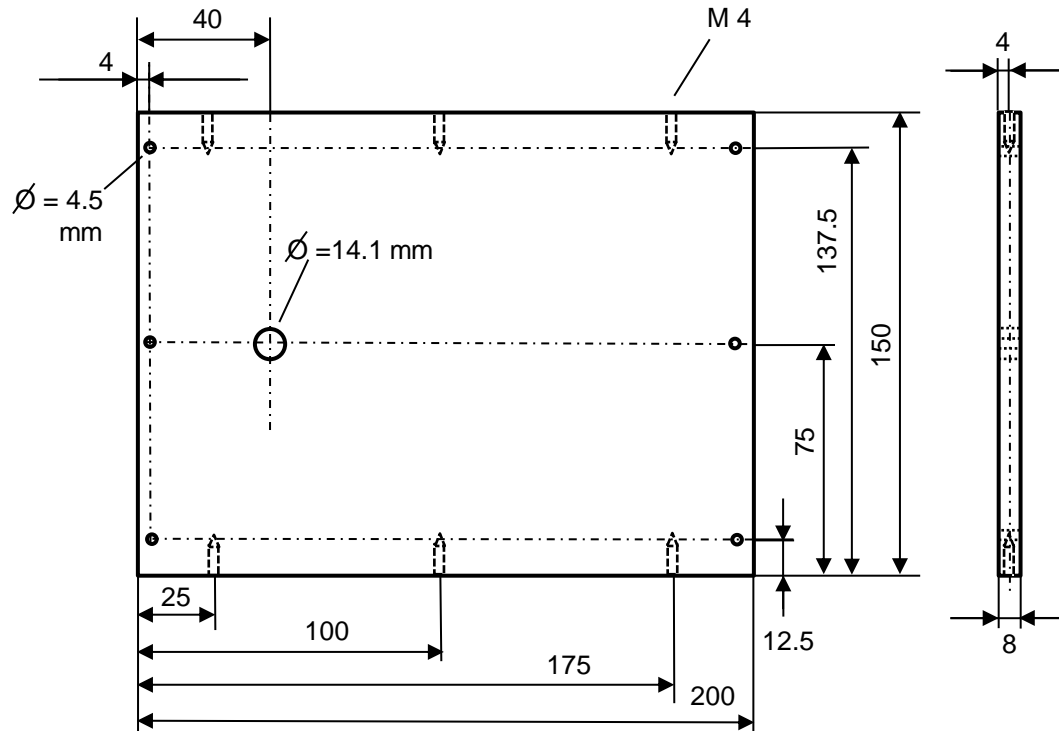


drawing not to scale!

Michael Hunger
Universities of Leipzig and Stuttgart

Part 4:

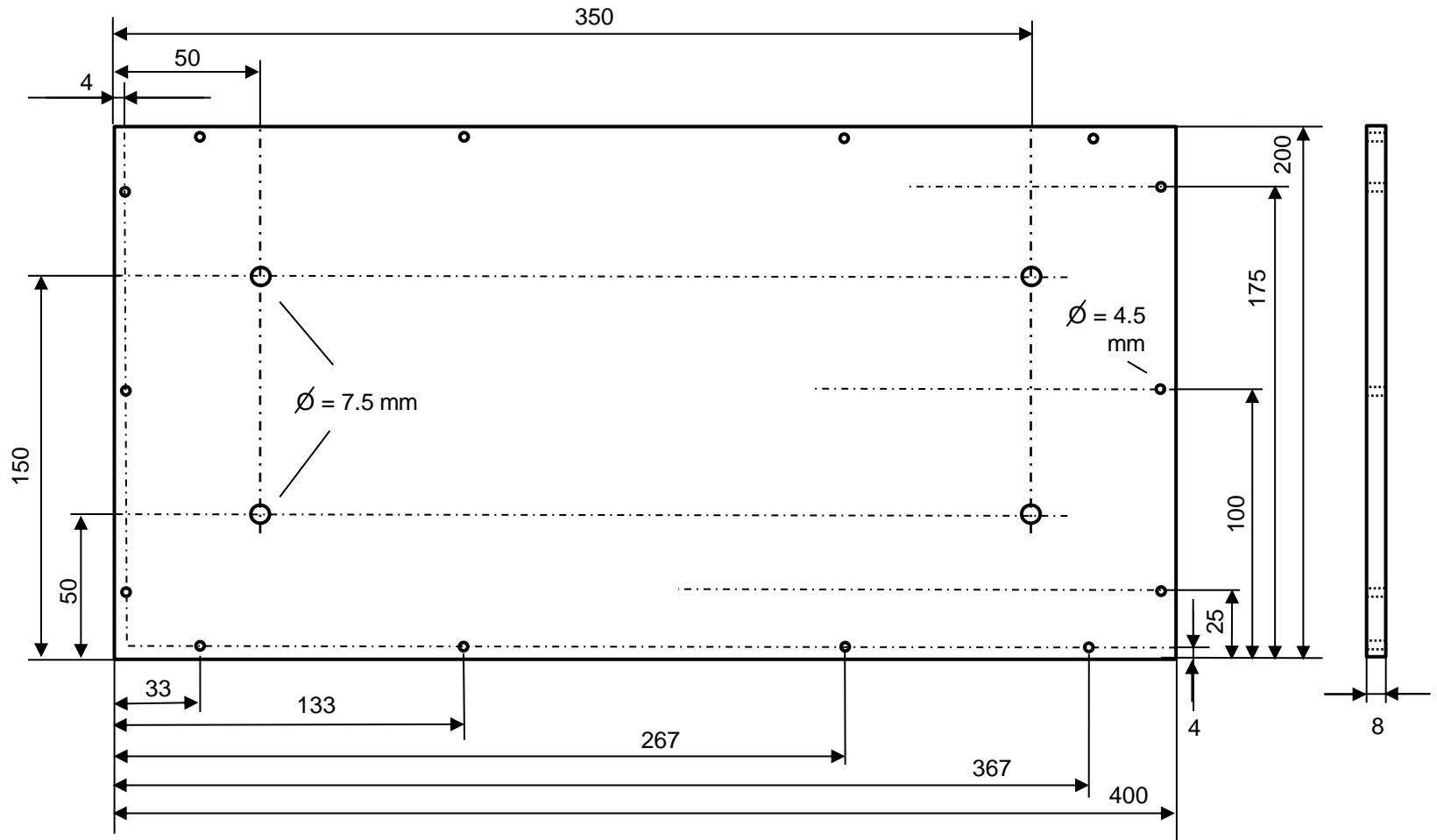
material polyvinyl chloride (PVC) or aluminum



drawing not to scale!

Part 5:

material polyvinyl chloride (PVC) or aluminum

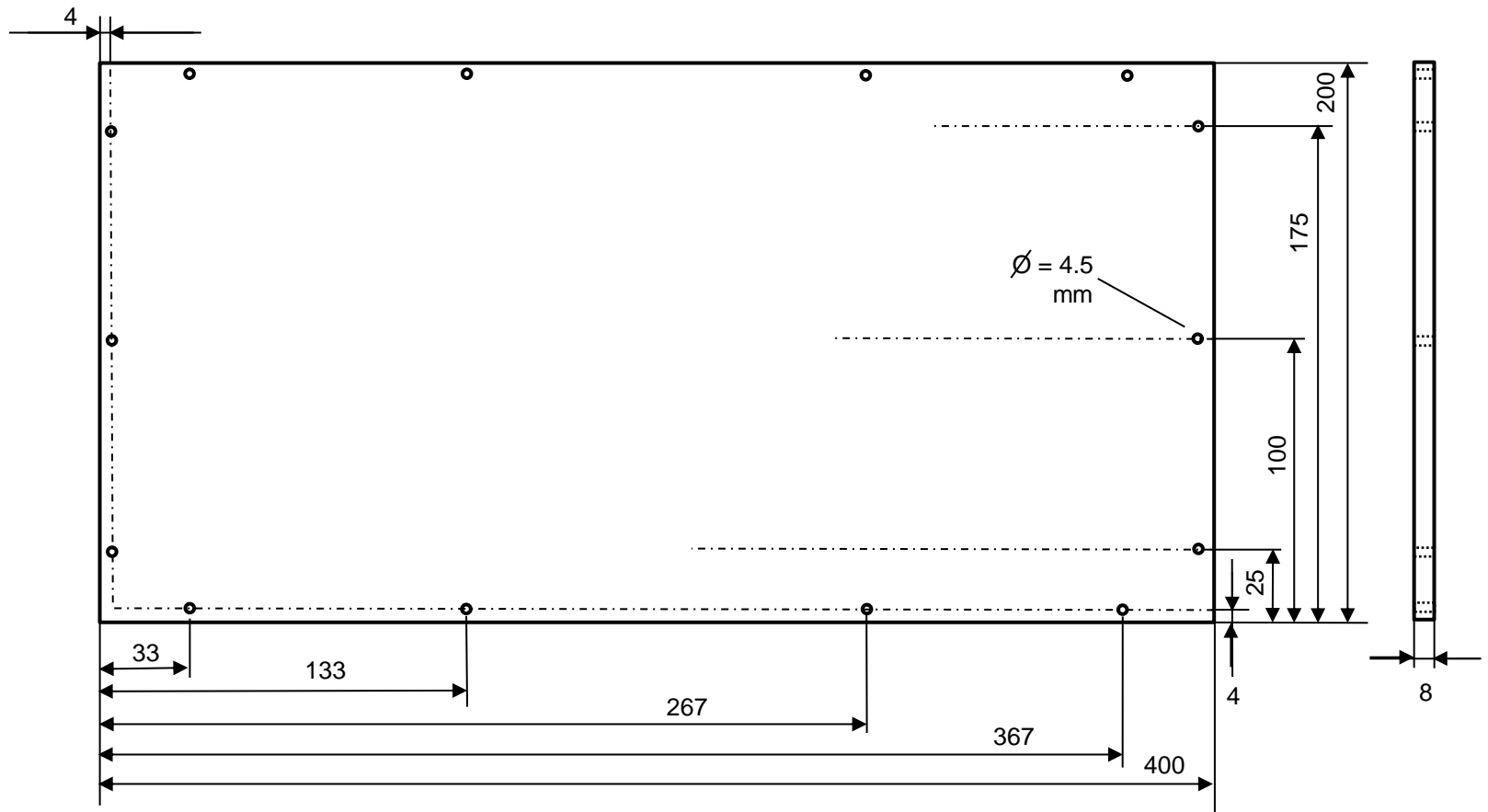


drawing not to scale!

Michael Hunger
Universities of Leipzig and Stuttgart

Part 6:

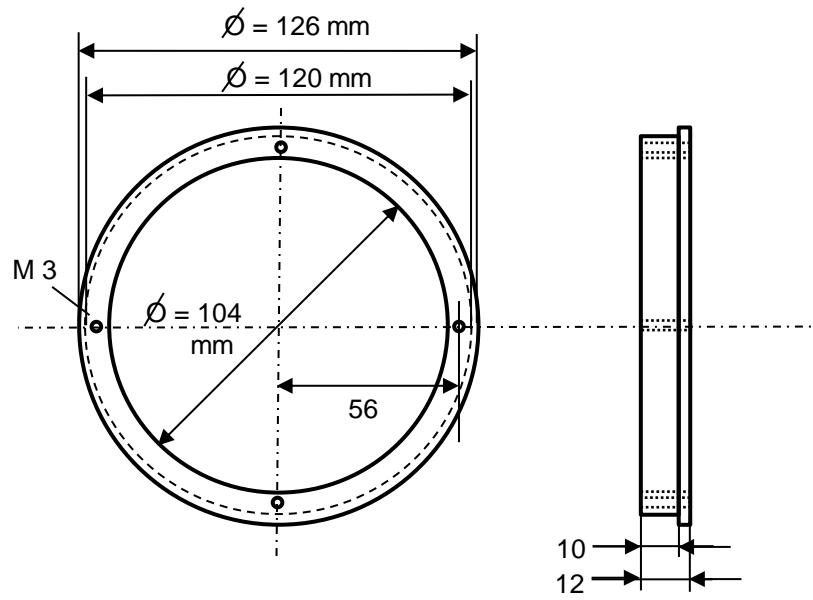
material plexiglass



drawing not to scale!

Michael Hunger
Universities of Leipzig and Stuttgart

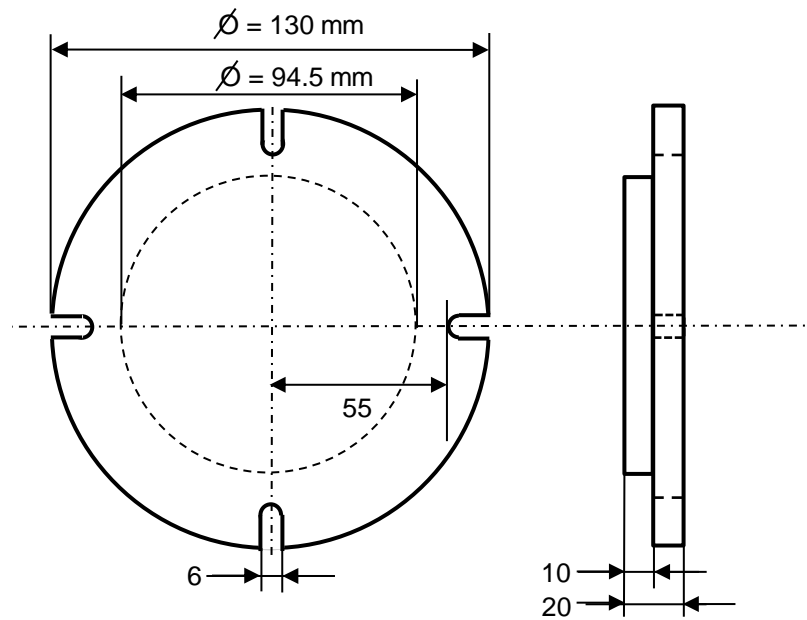
Part 7 (twice):
material aluminum



drawing not to scale!

Part 8:

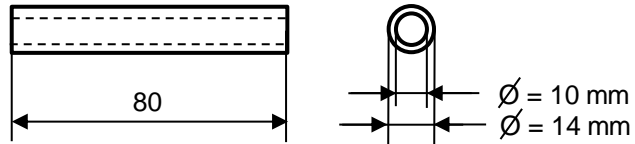
material polyvinyl chloride (PVC) or aluminum



drawing not to scale!

Part 9 (twice):

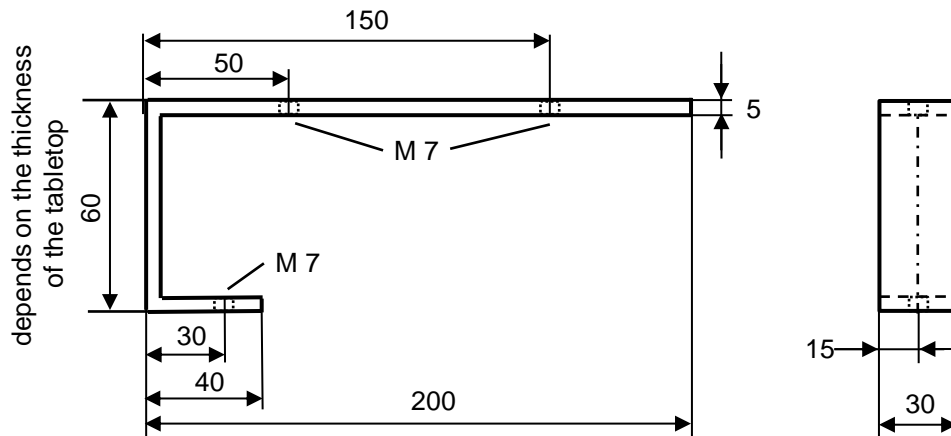
material glass, plexiglass, or aluminum



fixing in parts 2 and 4,
e.g. by a resin glue

Part 10 (twice):

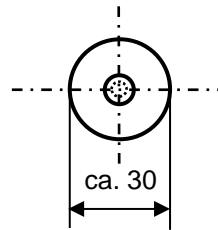
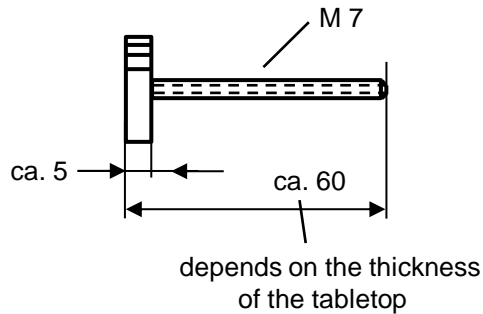
material steel



drawing not to scale!

Part 11 (twice):

material steel



Additional Materials:

8 screws M3, length ca. 18 mm, for fixing Parts 7 at Part 1

28 screws M4, length ca. 18 mm, for fixing Parts 1 to 6

4 screws M7, length 13 mm, for fixing Parts 10 at Part 5

4 screws M5 with handy head, length ca. 25 mm, for fixing Part 8 at Part 2

drawing not to scale!