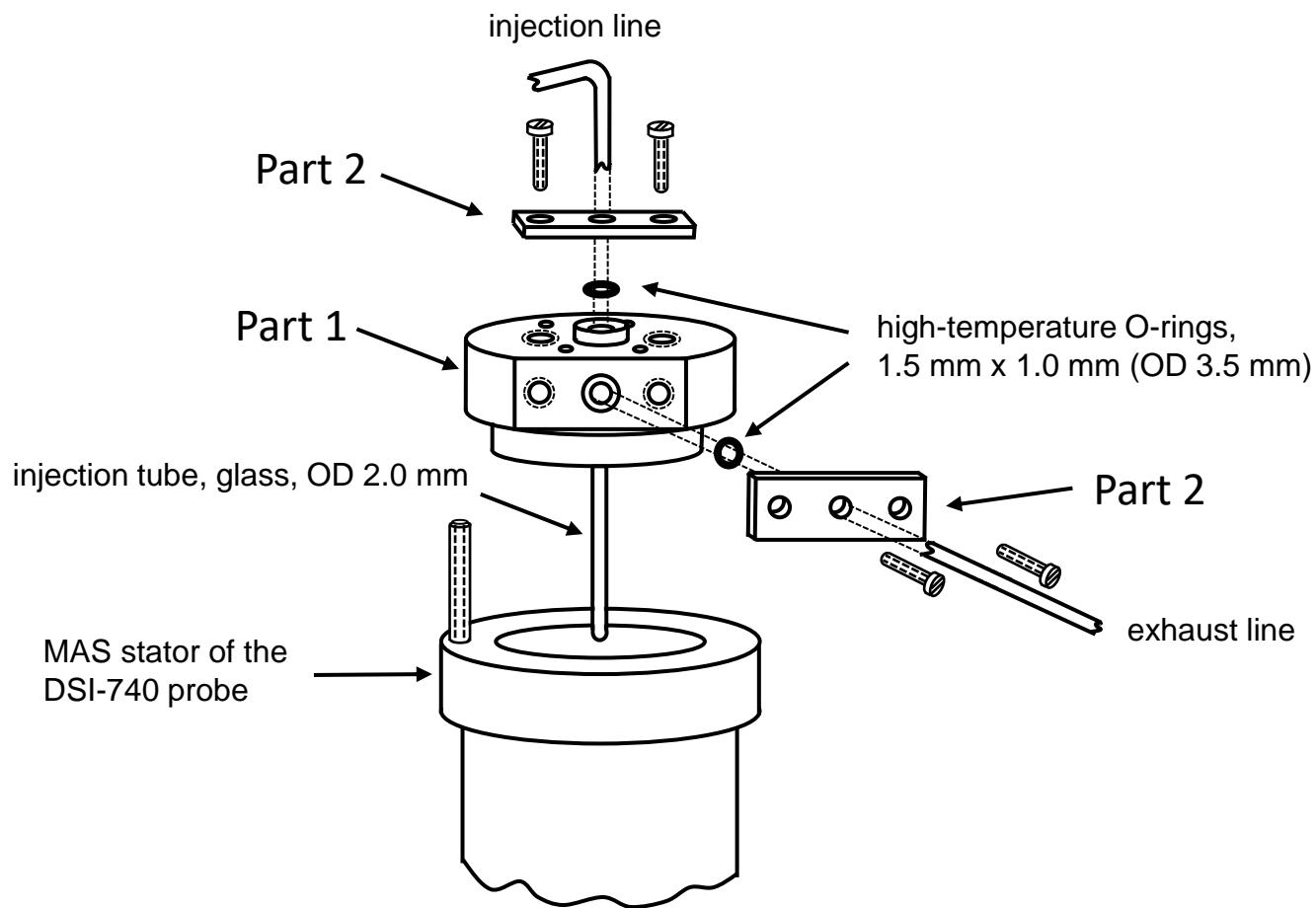


Different parts of the *in situ* injection system for the DSI-740 7 mm STD MAS NB NMR probe:

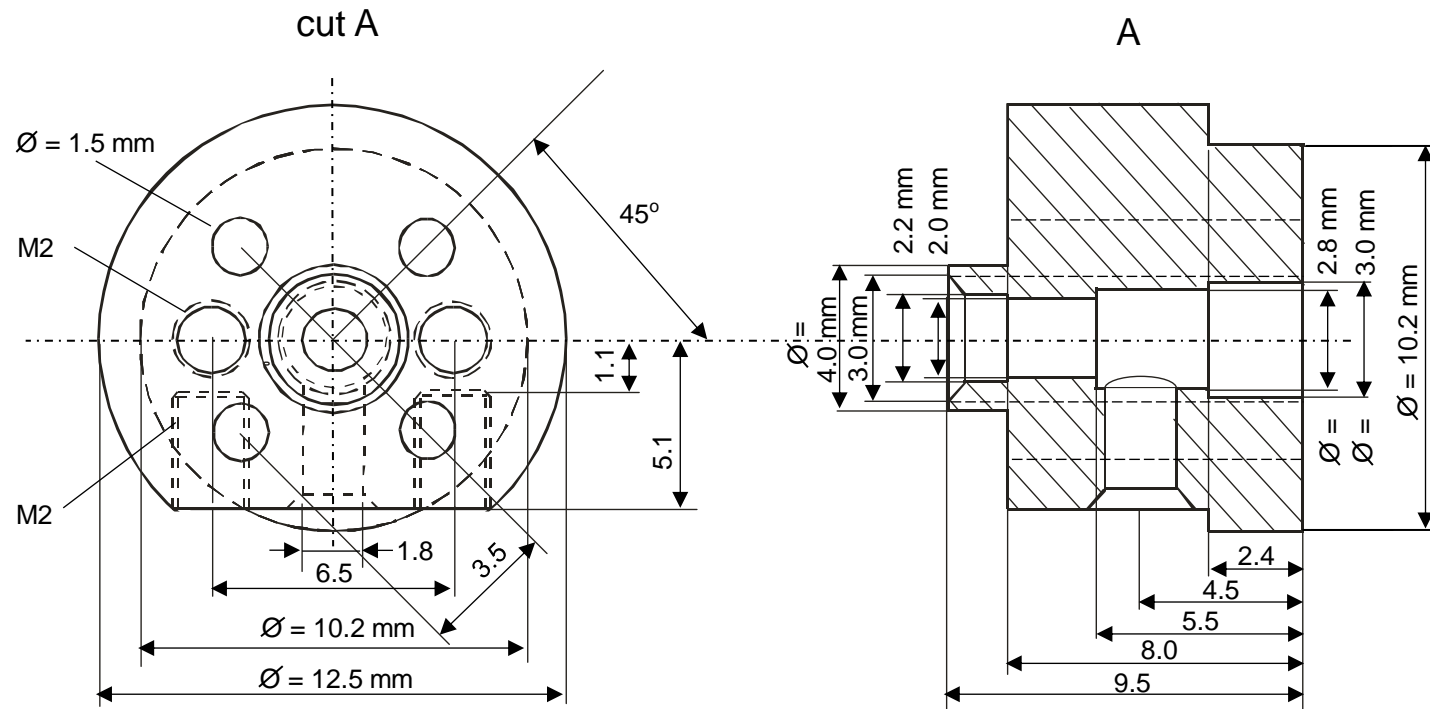


drawing not to scale!

Michael Hunger
Universities of Leipzig and Stuttgart

Part 1:

material SINTIMID PUR HT of ENSINGER, Germany

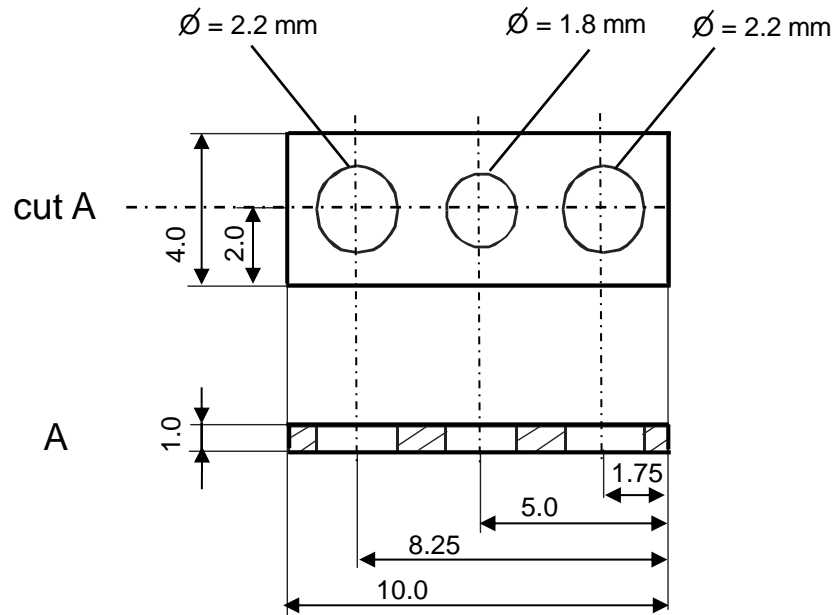


drawing not to scale!

Michael Hunger
Universities of Leipzig and Stuttgart

Part 2 (twice):

material aluminum or brass



Additional Materials:

4 screws M2, brass, length ca. 6 mm, for fixing Parts 2 on top and lateral on Part 1

2 high-temperature O-rings 1.5 mm x 1.0 mm (OD 3.5 mm)

1 glass tube, OD 2.0 mm, length 15 mm

drawing not to scale!